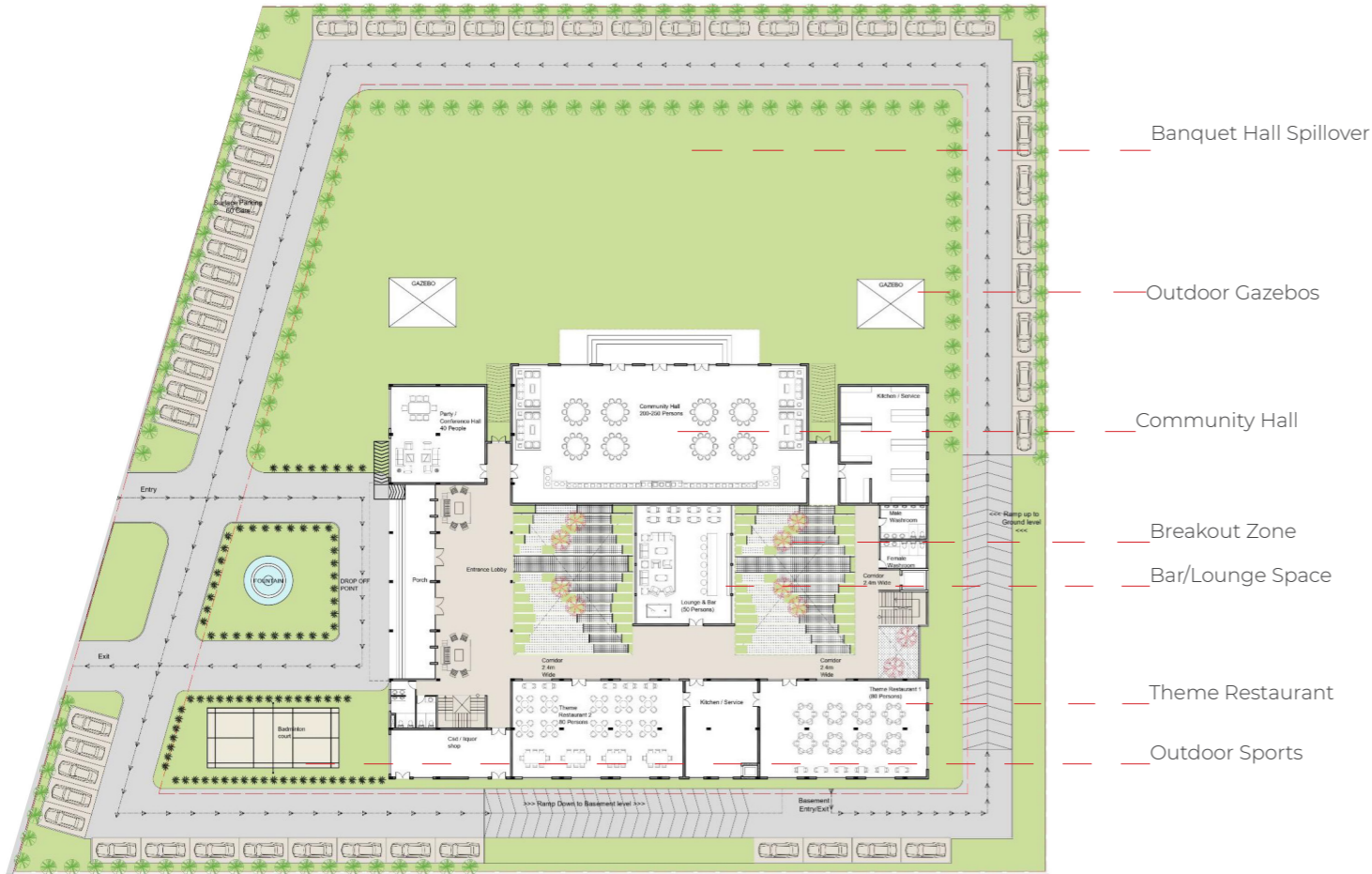


ARTISAN HOMES

Through the Artisan Homes,the design intends to revive and re-establish a patronage for traditional Indian artisanal skills. India is symbolized by the diversity of its art and culture, yet with the changing paradigm there is a great need to conserve these symbols that are under a growing threat of neglect. The design exploits the terrain on which the project is located, to create two different levels that are instrumental in segregating functions. In keeping with traditional Indian schema, the private living is organized

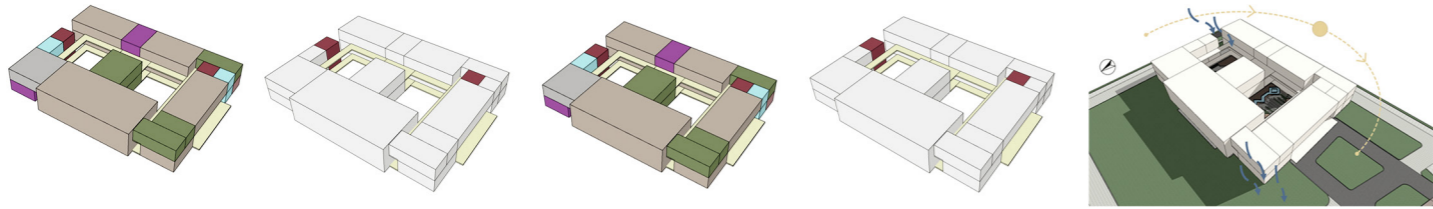
around a central courtyard which contains a temple, imparting a spiritual omnipresence. A strong graphic language of striation is the organizing principle of the design, to retain scale within this very large volume. These bands translate into a series of vertical surfaces, with a different story unveiling in each volume subtended between two surfaces.



Maximum exposure North-south.
Grass concrete pavers on peripheral roads to extend visual size of banquet lawns .
Due to the building placement north-south, maximum shade in lawn and courtyards.



Aerial view- front



Integration of various functions allowing both functions - Community hall and club functions to work in parallel without affecting each other. Such grouping of blocks allows continuous sharing of walls/ structural systems/services; giving economy of construction.



Ground Floor Plan



First Floor Plan



Pixilation of bricks as a new technique of material: Low cost and environment friendly material.
Courtyard: landscape features blending with the built form.
Maintaining visual connection between vertical circulation through design

