



Architecture Design Development

Site Location:Himachal,India

Site Area:24745 Sqm

Typology:Industrial

Role:Concept Development,Facade Design,Construction drawings,Site Coordination,Consultant Coordination.

THE PRINT FACTORY

YEAR:2019

STATUS:COMPLETE

The project can be defined as reinforcement of the existing building and enlargement with annexes for needed capacity.

This work is a good example for dealing with the complex program of a press industry in an already existing construction meant for another function. The interior floor plans have been opened up to create a sequence of more flexible spaces that are susceptible to contemporary patterns.

The scheme is based on choosing materials that reflects the simplicity in design.

Based on the production progress and logistics requirement, the design features a distinctive scheme - it's also an art gallery.

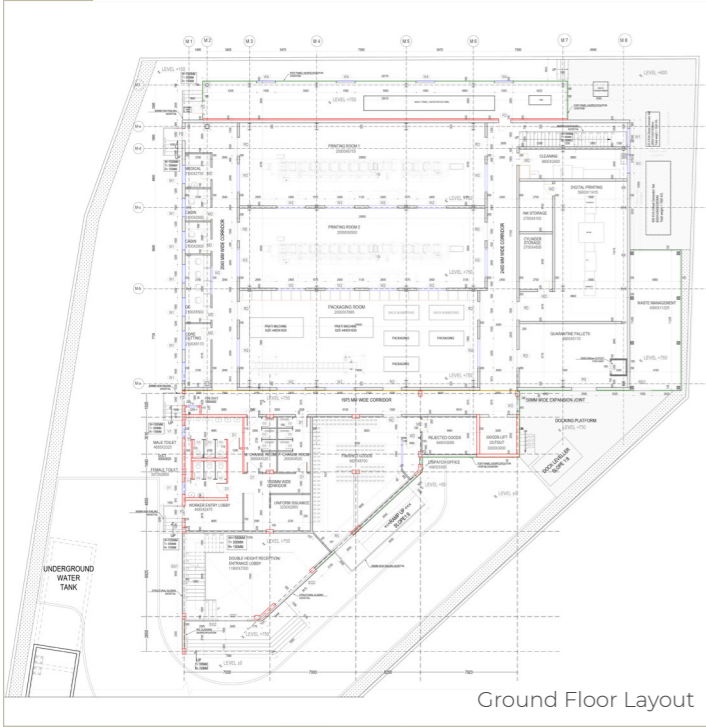
The interior space of the factory has a special visiting circulation corresponding to the manufacturing process, which runs independently from the lobby and connects every production workshop located on each level, exhibiting the modern manufacturing and logistics process from the storage of raw materials to the completion of the packaging.

The simple design of the red steel staircase and the flow of commuting workers on the corridors and stairs creates a warm production atmosphere with a sense of ritual.

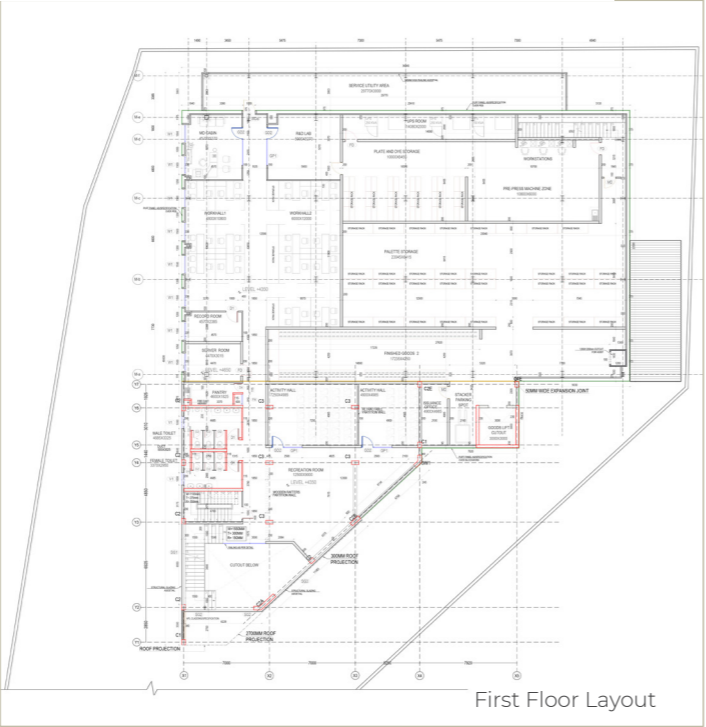
CONSTRUCTION DETAILS



Moodboard/Material Palette



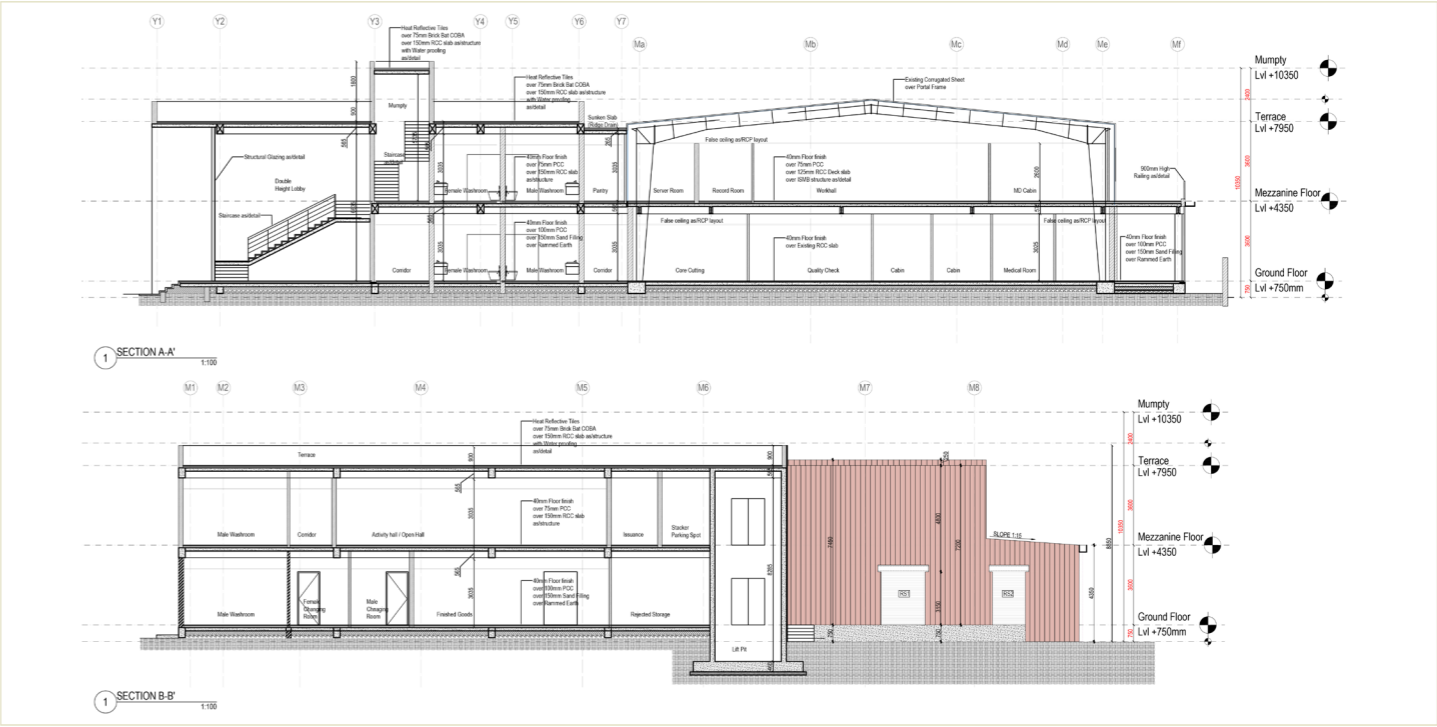
Ground Floor Layout



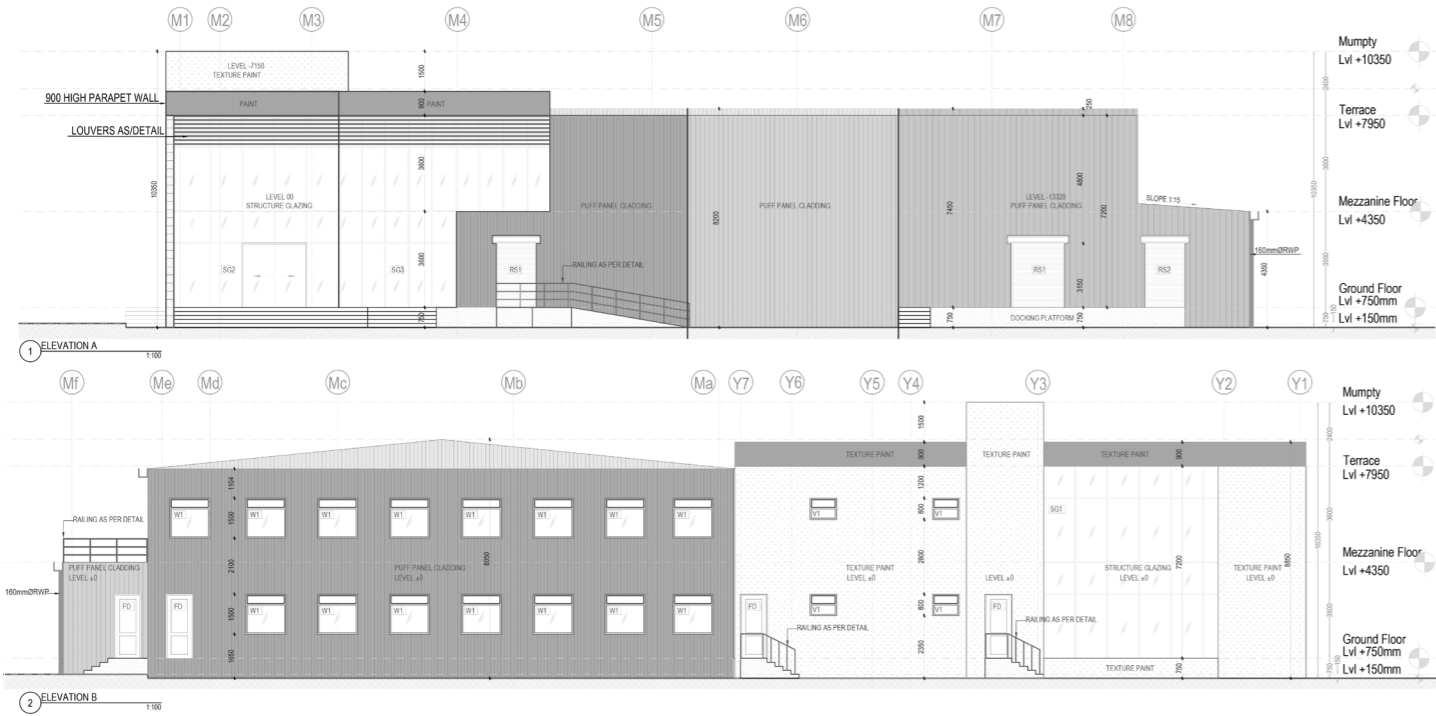
First Floor Layout



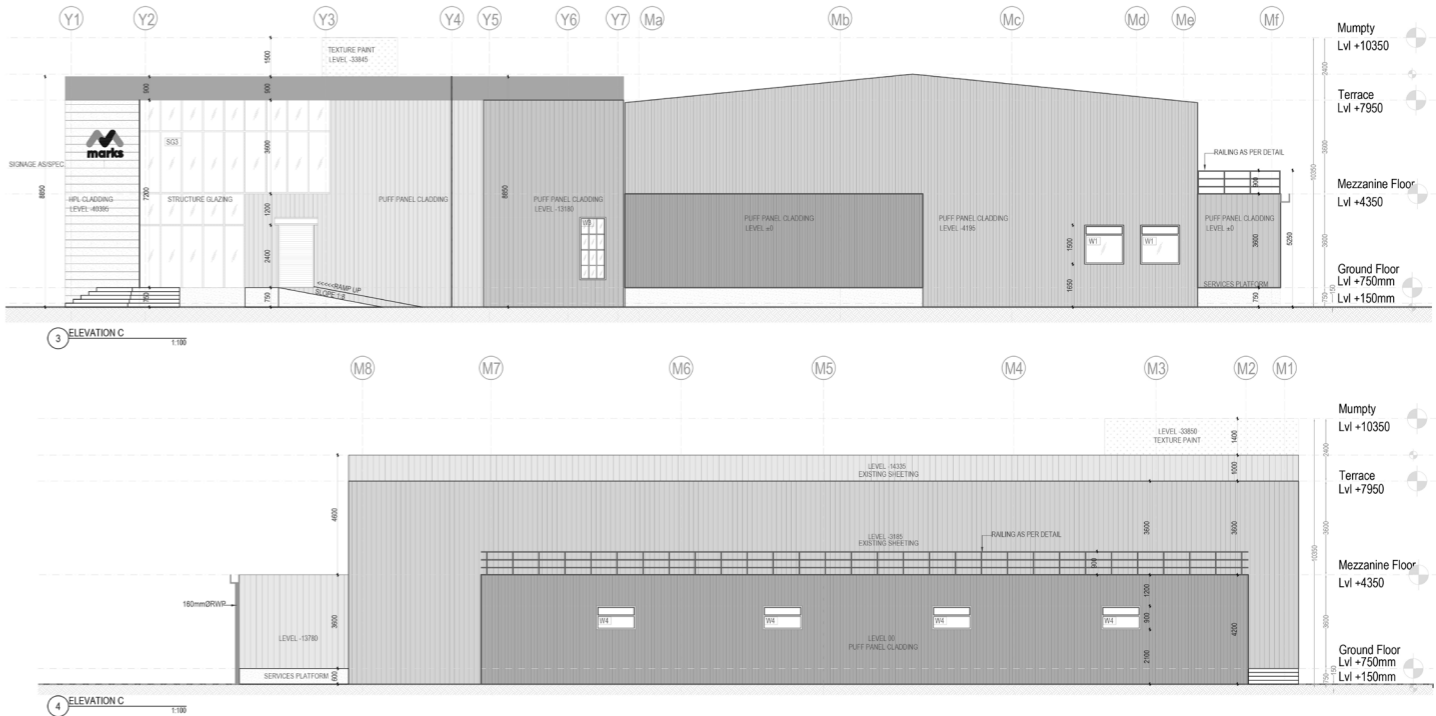
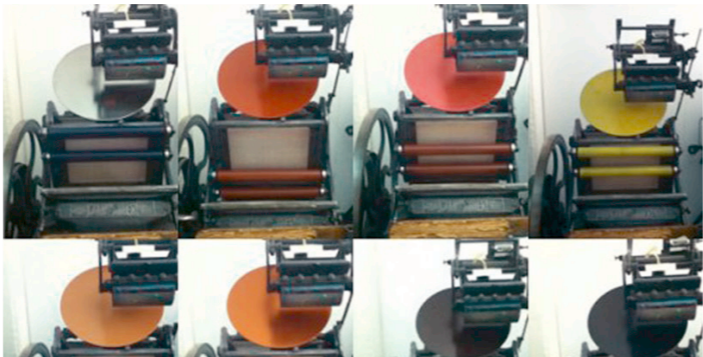
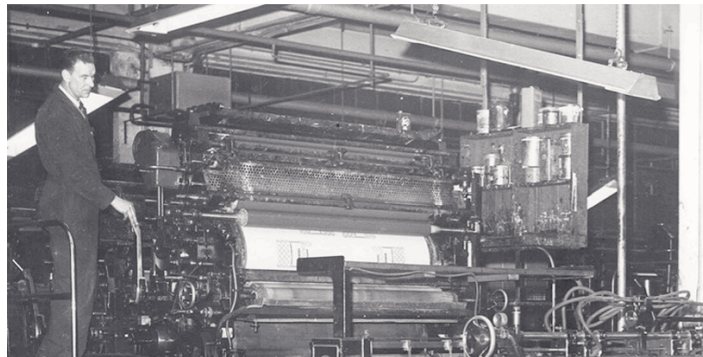
The main elevation is articulated by horizontal aluminum sunshade fins that generate a sequential rhythm on the floor-to-ceiling glazed curtain wall façade. This rhythmic backdrop of glass and fins is intermittently punctuated and juxtaposed by projections that form a compelling visual counterpoint.



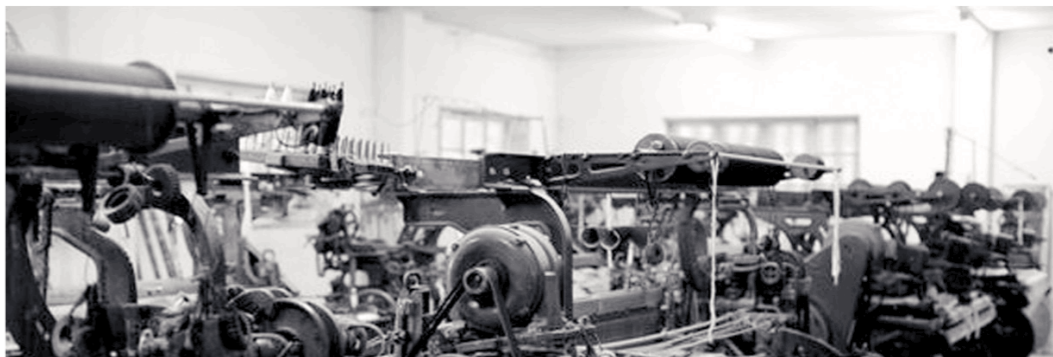
CONSTRUCTION DETAILS

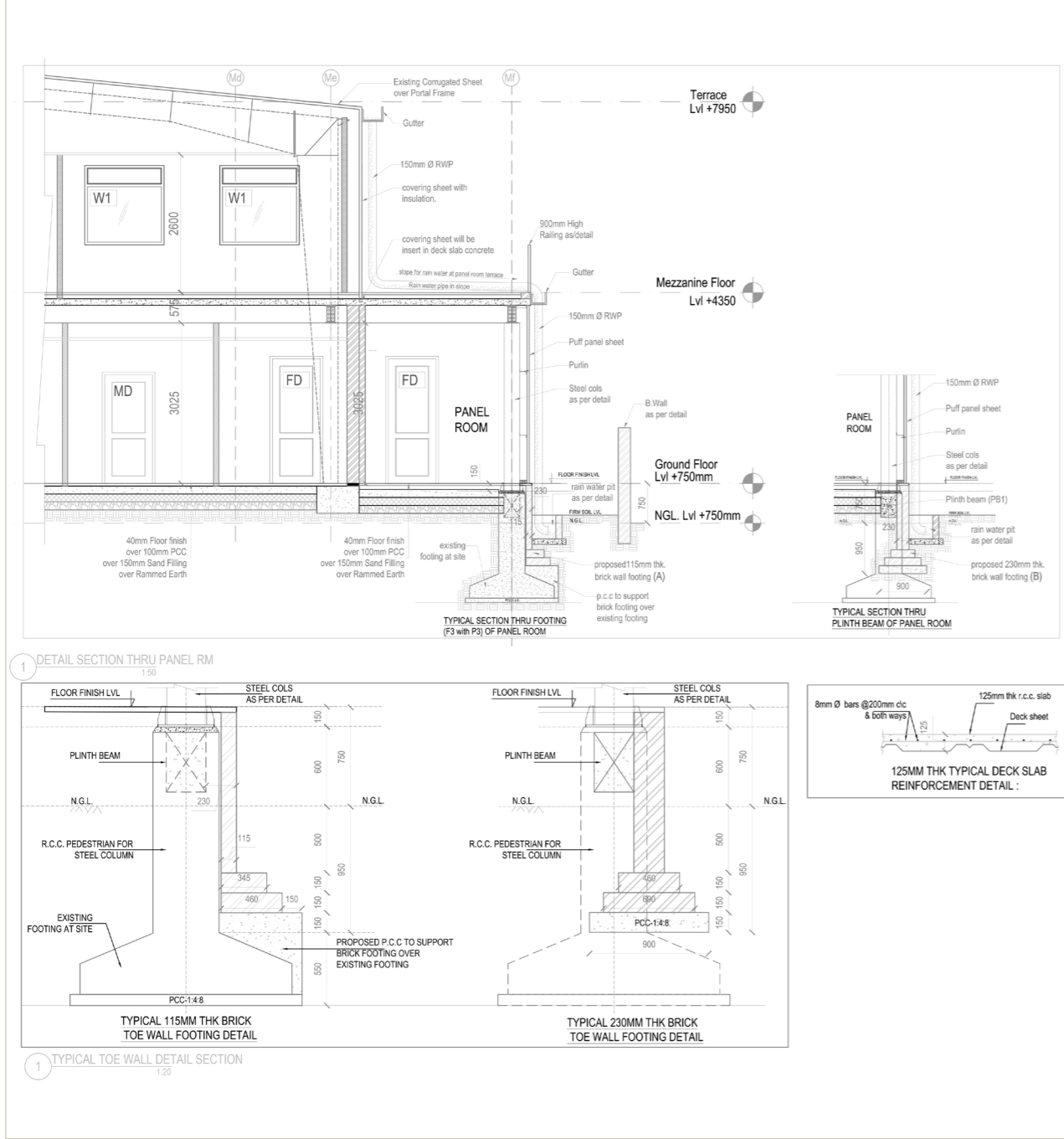


Facade details composed of fibre cement, red and grey high pressure laminate and double glass unit cladding.

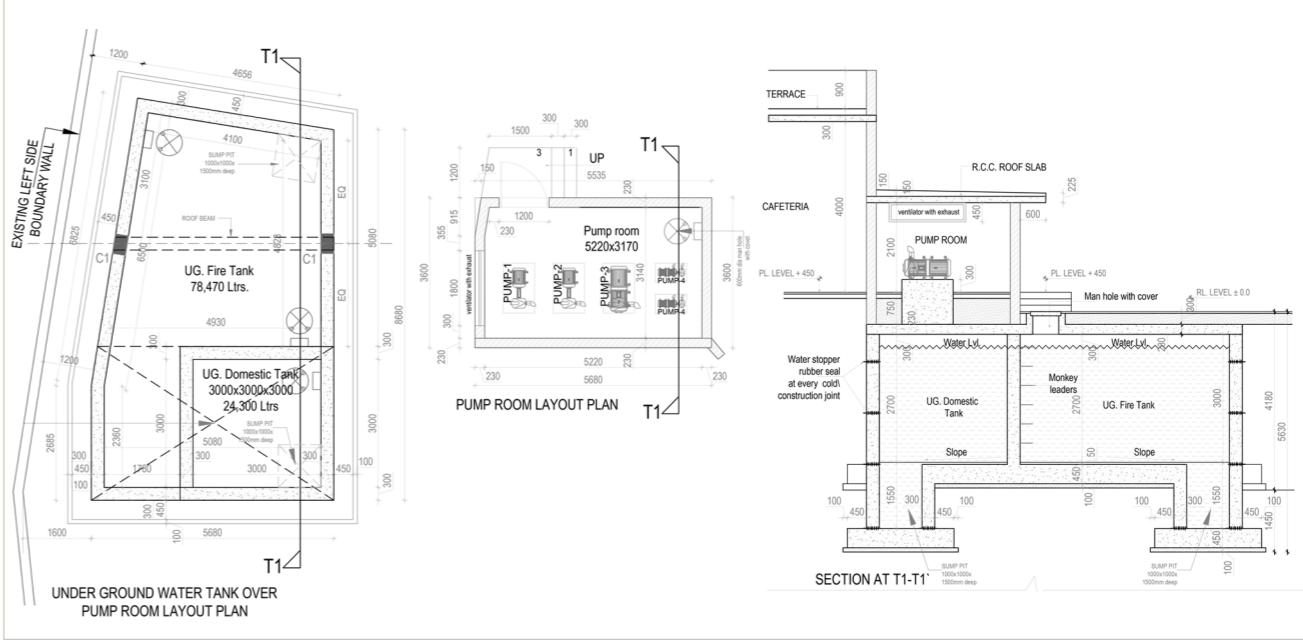


Puff Panel cladding along with AAC blocks allow for high insulation from heat inside the building.





Typical wall section and structural column details.



Underground pump room details.



On-site Construction Details

